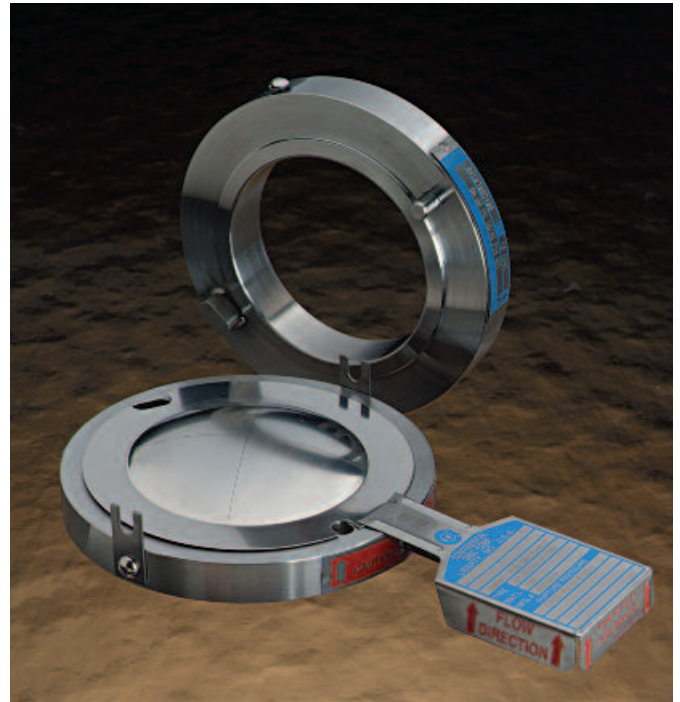


RHI

Flat Seat Holder Assembly

Introducing Continental Disc Corporation's newest addition to its full range of rupture disc holders:

The RHI Holder is a flat seat rupture disc holder which provides improved rupture disc sealing capabilities. The minimal overall height of the RHI Holder allows installation in tight piping arrangements, and retrofit into many existing installations.



RHI Flat Seat Holder Features include:

- Available in standard sizes from 1" through 8" (25mm - 200mm)
- Available in standard pressure classes from 150# through 600# ANSI (PN 10/16 - PN 40 DIN)
- Standard materials of 316 Stainless Steel, Carbon Steel, Monel^{®*}, and Hastelloy C^{®**}
- Alignment pins, which provide positive rupture disc orientation
- J-Hook, as standard, to insure positive holder orientation in the system
- Tapered flat seat design, for a positive seal
- Designed to accommodate MICRO X[®] and Composite (FS) rupture discs
- Holder can accommodate a 1/4" gauge tap in the outlet. Larger taps are optional with an increase in outlet height
- Tested performance; the RHI design has been extensively tested in our ASME-Accepted Flow Test Laboratory, and proven not to leak
- Design allows retrofit into many existing installations, without concern for assembly height

One Holder—But Variable Rupture Disc Design Options

The RHI Holder is available in a wide range of sizes and materials, and is designed to house either the MICRO X Rupture Disc (shown above) or the Composite Flat Seat Rupture Disc. These non-fragmenting designed rupture discs provide a wide choice of burst ratings, from the low pressures of the Composite Rupture Disc through the higher pressures of the scored MICRO X Rupture Disc.

* Monel is a registered trademark of the Inco family of companies.

** Hastelloy is a registered trademark of Haynes International.



**Continental Disc[®]
Corporation**

Performance Under Pressure[®]

DIMENSIONS AND WEIGHTS

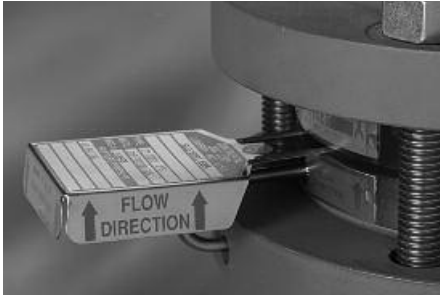
Table 1 — RHI Flat Seat Holder Dimensions and Weights

Rupture Disc Nominal Size	ANSI		DIN		Height inch / mm	Weight lb / kg
	Class	Outside Diameter (inch / mm)	Class	Outside Diameter (mm)		
1" 25 mm	150	2.50 / 635			150 / 38	1.5 / 0,7
	300 / 600	2.75 / 69,9	10 / 40	6,9	1.50 / 38	1.9 / 0,9
1-1/2" 40 mm	150	3.25 / 82,6			1.50 / 38	2.4 / 1,1
	300 / 600	3.63 / 92,2	10 / 40	92,2	1.50 / 38	3.3 / 1,5
2" 50 mm	150	3.25 / 82,6			1.50 / 38	2.4 / 1,1
	300 / 600	4.25 / 108,0	10 / 40	108,0	1.50 / 38	4.0 / 1,8
3" 80 mm	150	5.25 / 133,4			1.50 / 38	5.1 / 2,3
			10 / 40		1.50 / 38	7.0 / 3,2
	300 / 600	5.75 / 146,1			1.50 / 38	7.0 / 3,2
4" 100 mm			10 / 16	162,0	1.50 / 38	6.8 / 3,1
			25 / 40	168,0	1.50 / 38	7.8 / 3,5
	150	6.75 / 171,5			1.50 / 38	8.4 / 3,8
	300	7.00 / 177,8			1.50 / 38	9.6 / 4,4
6" 150 mm	600	7.50 / 190,5			1.50 / 38	12 / 5,4
			10 / 16	217,0	2.00 / 51	14 / 6,4
	150	8.63 / 219,2			2.00 / 51	14 / 6,4
			25 / 40	223,0	2.00 / 51	15 / 6,8
	300	9.75 / 247,7			2.00 / 51	24 / 11
8" 200 mm	600	10.38 / 263,7			2.00 / 51	29 / 13
					2.00 / 51	38 / 17
	150	10.88 / 276,4			2.25 / 57	21 / 9,5
			10 / 16	272,0	2.25 / 57	23 / 10
			25	283,0	2.25 / 57	26 / 12
			40	290,0	2.25 / 57	29 / 13
	300	12.00 / 304,8			2.25 / 57	36 / 16
600	12.50 / 317,5			2.25 / 57	42 / 19	
				2.25 / 57	62 / 28	
				2.25 / 57	59 / 27	

J-Hook and Alignment Pins

The RHI Holder offers two alignment pins in the holder outlet, which help assure correct rupture disc orientation into the holder. The holder is also equipped with a J-Hook for proper indexing and flow orientation between the companion flanges. Both the J-Hook and alignment pins are provided on all RHI Holders.

Tagging



The RHI Holder is supplied with a permanently attached stainless steel nameplate with arrows that indicate flow direction. In addition, the Composite and MICRO X rupture discs are supplied with a three-dimensional flow direction tag. Directional arrows on both the tag and nameplate provide a means to visually verify the rupture disc assembly is properly oriented in your system.



A customer's pertinent identification information (specified at time of order) will be stamped on the rupture disc tags and holder tags.

Application Flexibility

In the event that there is a change in system operating requirements, the flexibility of the RHI Assembly permits utilization of various rupture disc types in order to meet a wide range of burst pressures. The Composite Flat Seat Rupture Disc may be selected for handling very low burst pressures (down to 3 psig / 0,20 barg, depending on size), and the MICRO X Rupture Disc can be utilized for higher pressures (up to 3600 psig / 248,28 barg, depending on size). Thus, the type of rupture disc can be changed, rather than replacing the existing holder.

Ordering Information

To facilitate manufacturing and shipping of your RHI Rupture Disc Assembly, the following information should be supplied when ordering:

HOLDER SPECIFICATIONS

- Quantity _____ • Size _____
- Bolting class (ANSI, DIN)
- Material (inlet, outlet)
- Options: gasket facing, gauge tap, coatings
- Accessories: nipple/tee, excess flow valve, pressure gauge, studs and nuts, eyebolts, jackscrews

RUPTURE DISC SPECIFICATIONS

- Quantity _____ • Size _____
- Type _____
- Options: linings, coatings, rings, gaskets, vacuum support
- Materials _____
- Specified pressure _____
- Specified temperature _____
- Manufacturing range: Standard, 1/2, 3/4 or min/max
- Previous manufacturing number (if known) _____

QUALITY ASSURANCE / DOCUMENTATION

- ASME Code tests (UD) Code Stamp per Section VIII) _____
- Special cleaning _____
- Special packaging _____
- Special tagging _____
- Temperature testing _____
- Material test reports _____
- Other _____

OPERATING SPECIFICATIONS

- Maximum allowable working pressure (vessel M.A.W.P.) _____
- Operating pressure _____
- Operating temperature _____
- Vacuum / backpressure _____
- Cycle conditions _____
- Flow rate required _____
- Media _____
- Molecular weight/specific gravity _____
- Use under relief valves _____

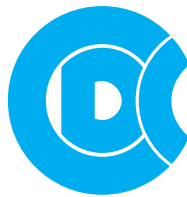
For more specific information regarding applicable rupture discs and B.D.I. Alarm System, consult your Continental Disc representative or the factory.

B.D.I.®* Alarm System

In situations where it is important for immediate notification of pressure relief, Continental's B.D.I. (Burst Disc Indicator) Alarm System can be used. Compatible with the MICRO X and Composite Flat Seat rupture discs, the Universal B.D.I. Alarm is composed of copper conductors adhered to a fluoropolymer membrane and assembled between non-asbestos gaskets. As the rupture disc bursts, the alarm strip is severed, triggering an electrical signal which translates into audio and/or visual warning signals actuated through an alarm monitor.



The Continental Disc B.D.I. Alarm Monitor is available with Factory Mutual approval, intrinsically safe outputs, and computer compatibility.



Continental Disc[®] Corporation

Performance Under Pressure[®]



ASME Code Symbol Stamp
Available When Specified

China Manufacture License
Available When Specified



Pressure Equipment Directive
Available When Specified

Continental Disc Corporation has representatives located throughout the world.
Contact the C.D.C. office nearest you for the authorized representative in your area.

CORPORATE HEADQUARTERS

Continental Disc Corporation
3160 W. Heartland Drive
Liberty, MO 64068-3385 USA

Phone: (816) 792-1500
FAX: (816) 792-2277 / 5447
E-mail: pressure@contdisc.com
Website: www.contdisc.com

THE NETHERLANDS

Continental Disc Corporation
Energieweg 20
2382 NJ Zoeterwoude-Rijndijk
The Netherlands

Phone: + (31) 71-5412221
FAX: + (31) 71-5414361
E-mail: cdcni@contdisc.com

CHINA

Continental Disc Corporation
Room 910, Tower B, COFCO Plaza
No. 8 JianGuoMenNei Avenue
Beijing (100005), P.R. China

Phone: + (86) 10-6522-4885
Fax: + (86) 10-6522-2885
Mobile: + (86) 137-0103-8871
E-mail: cdcchina@contdisc.com

INDIA

Groth Continental Mfg. Pvt. Ltd.
Survey No. 423/P, Mahagujarat
Industrial Estate, Moraiya, Sarkhej-
Bavla Road, Ahmedabad 382213,
INDIA

E-mail: gcmpl@contdisc.com